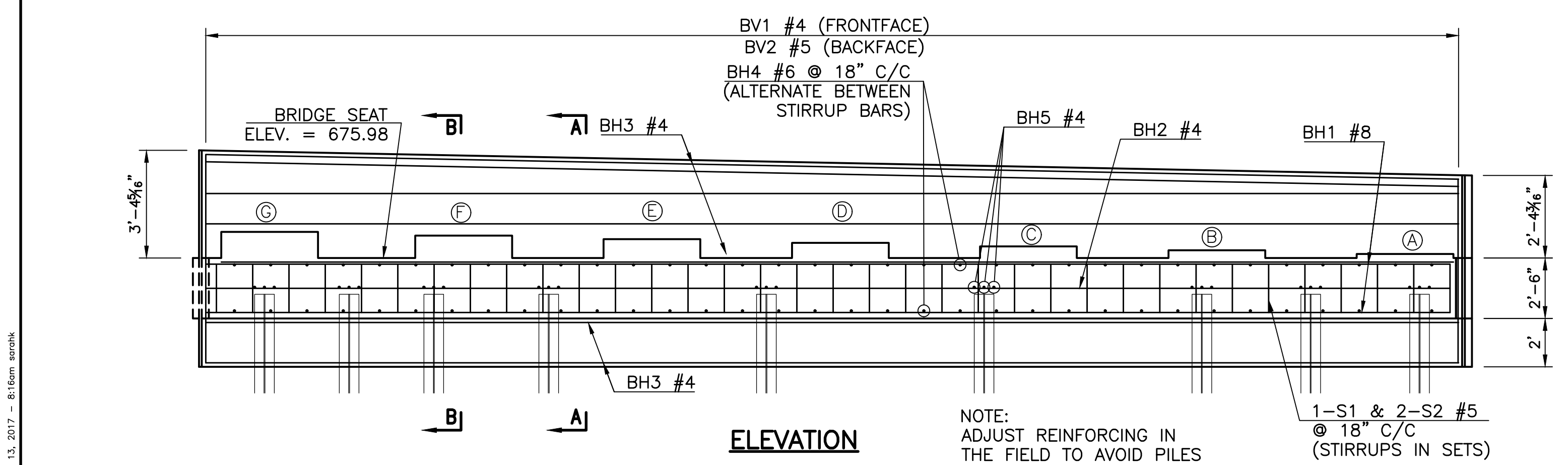


PLAN

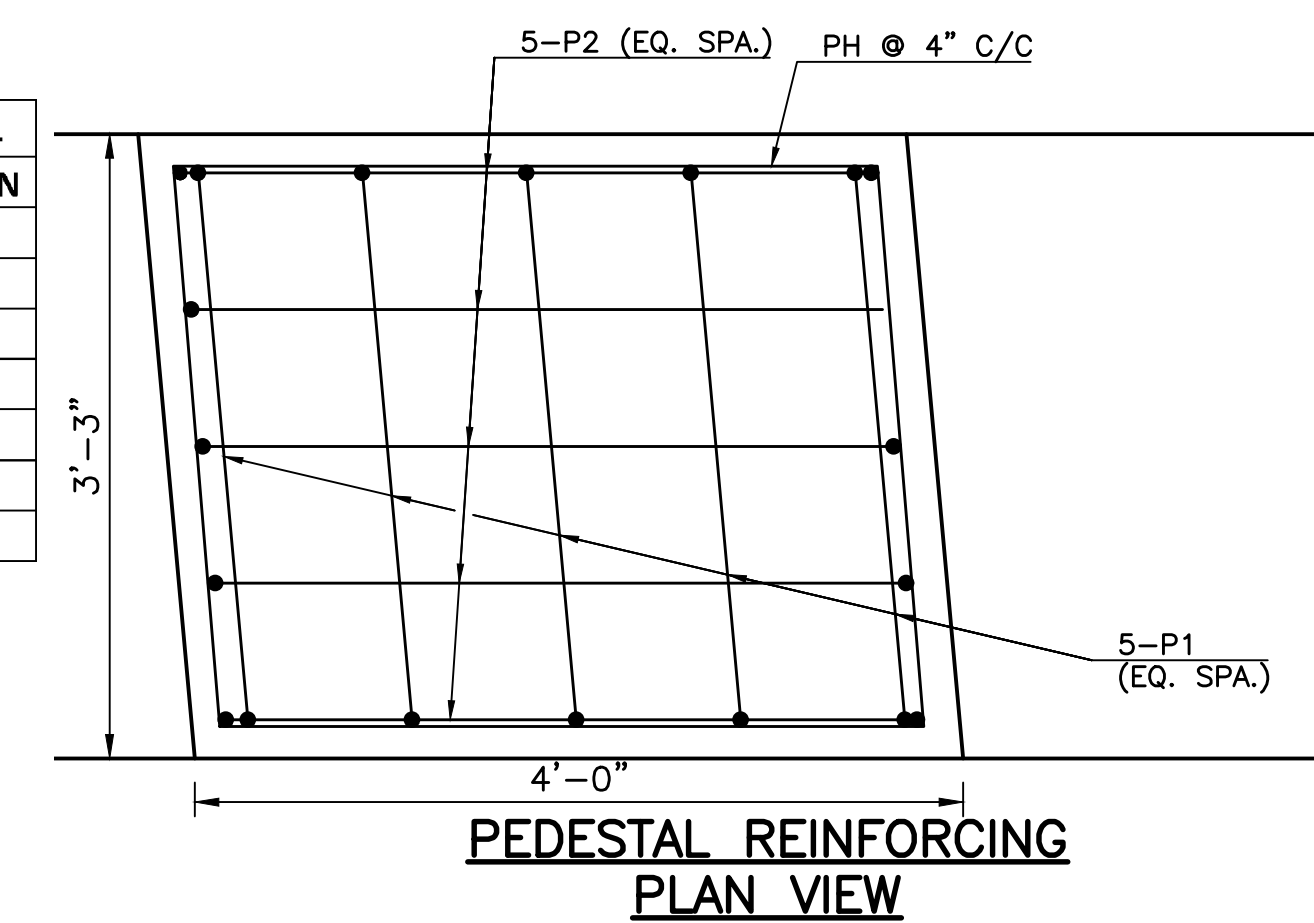


ELEVATION

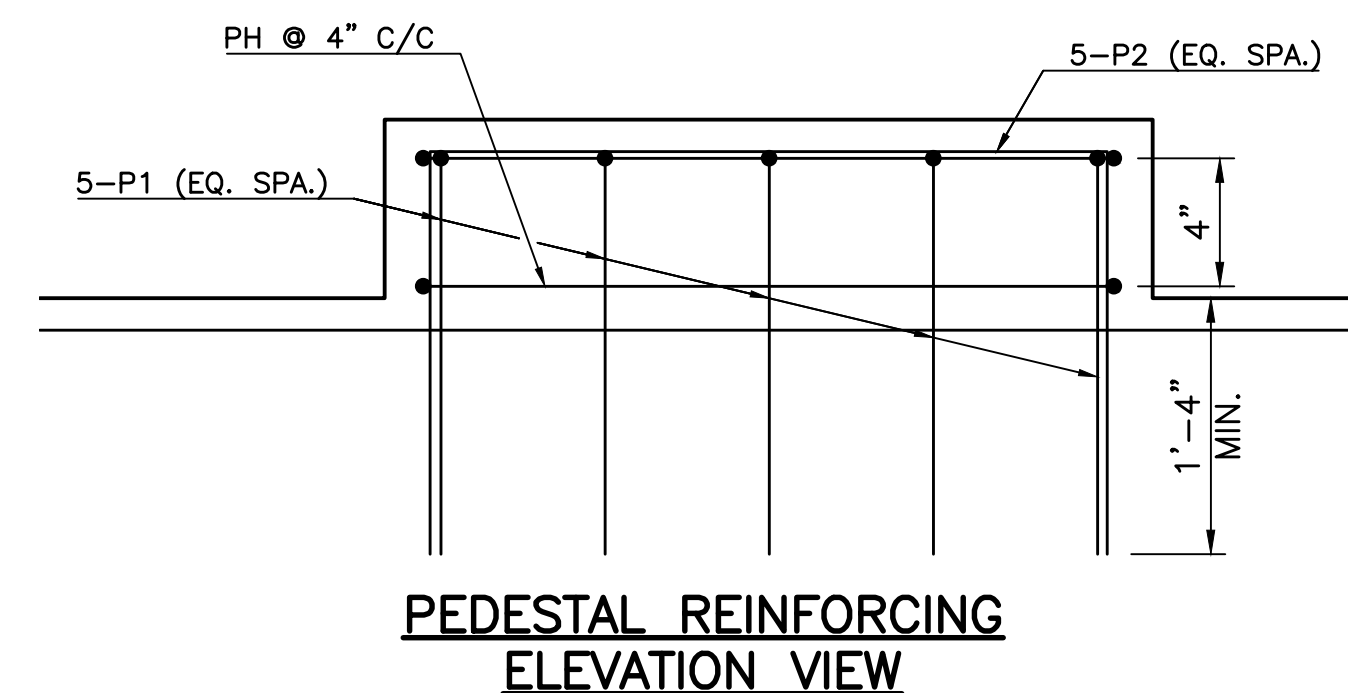
NOTE: ADJUST REINFORCING IN THE FIELD TO AVOID PILES

BRIDGE "A" ABUT. NO. 1

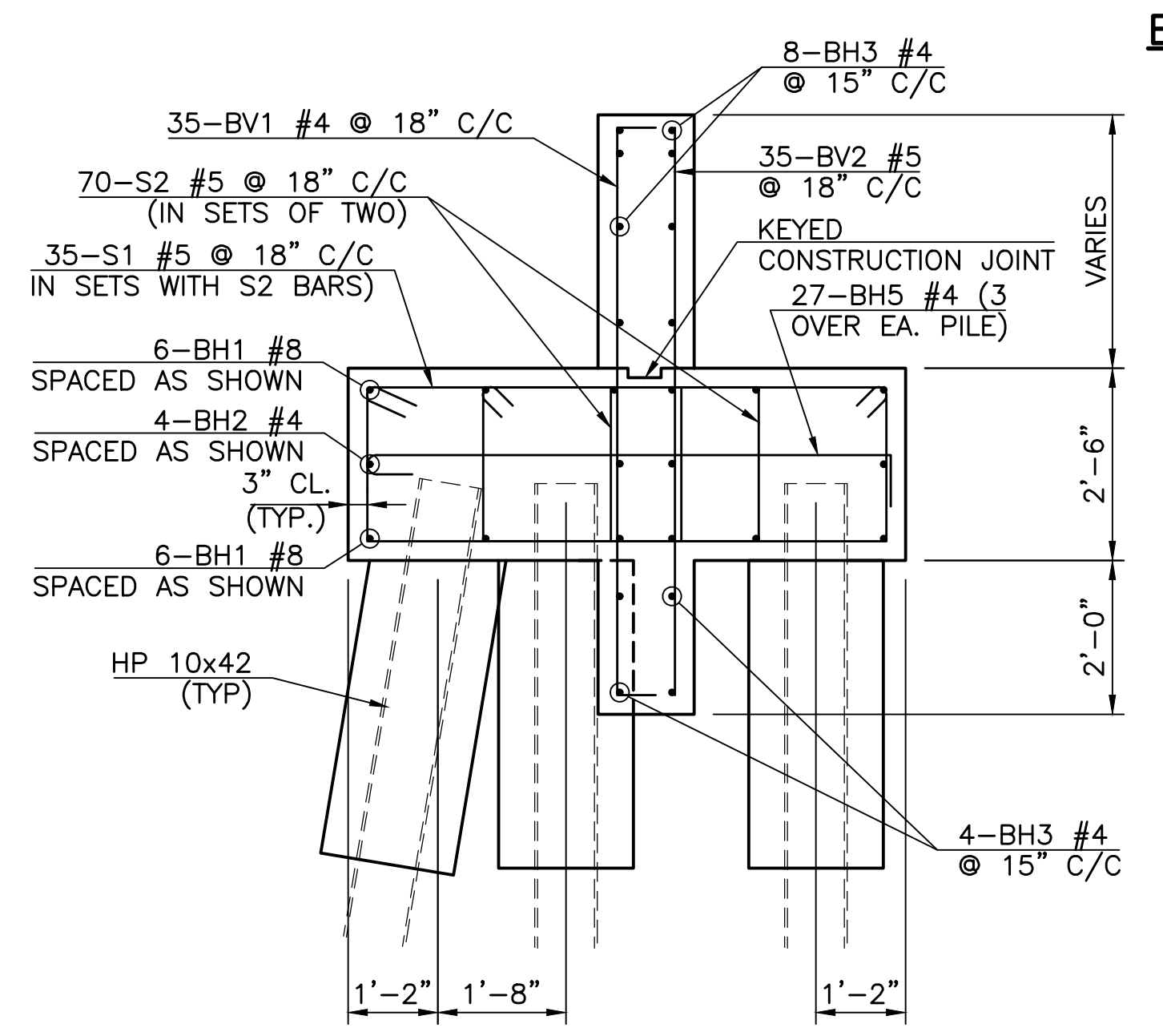
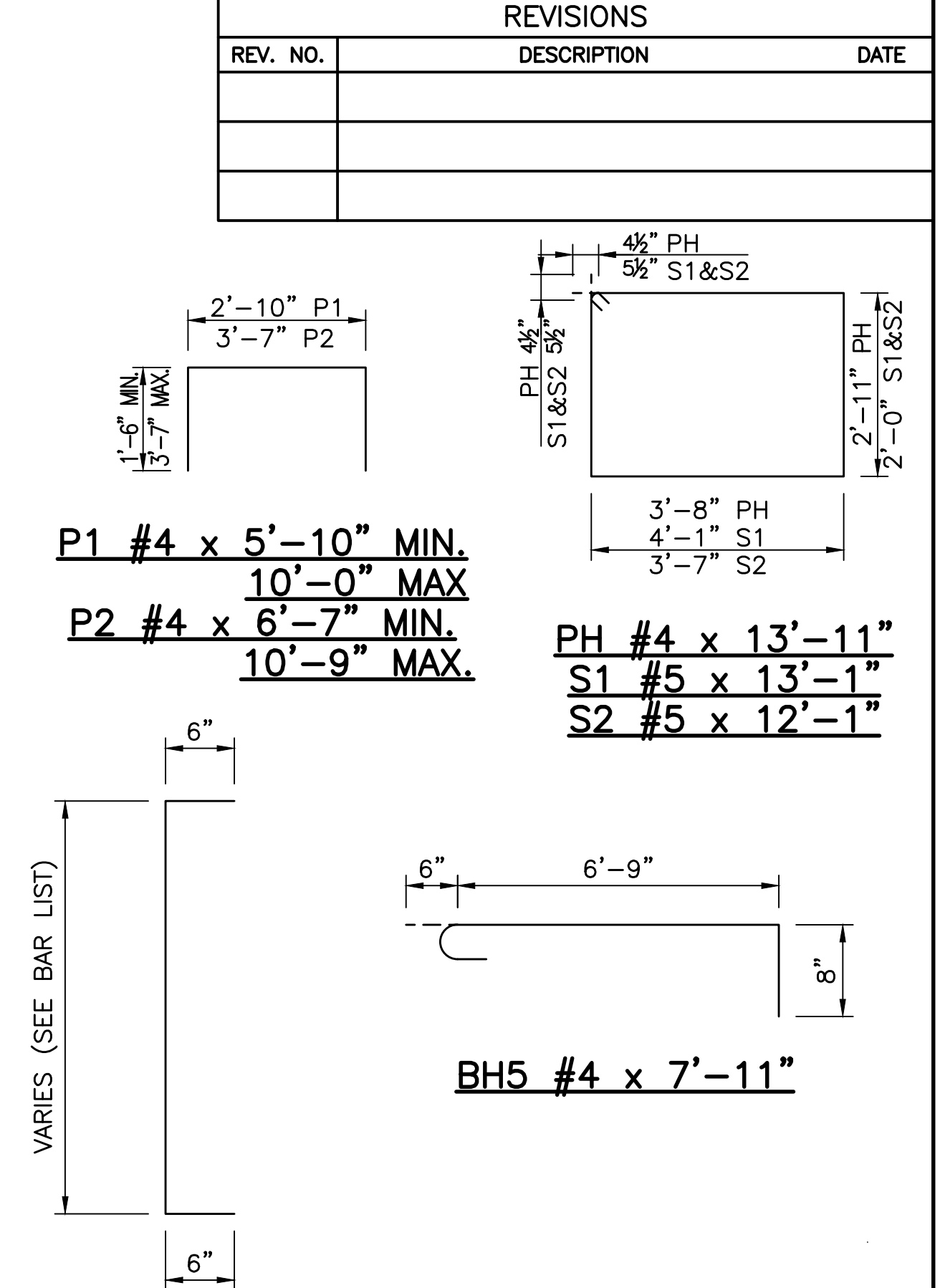
POINT	PEDESTAL ELEVATION
A	676.15
B	676.30
C	676.46
D	676.61
E	676.76
F	676.91
G	677.06



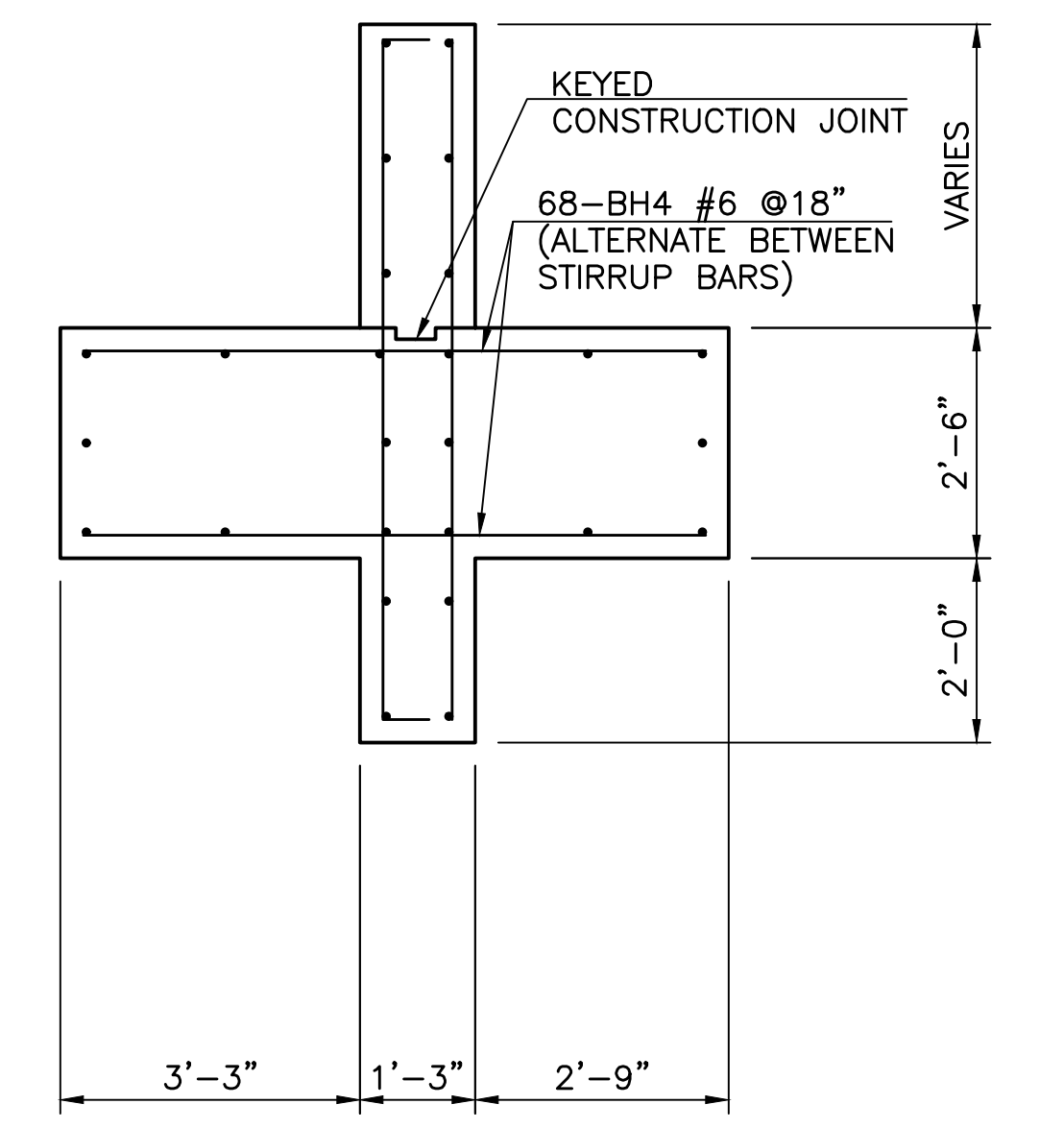
PEDESTAL REINFORCING PLAN VIEW



PEDESTAL REINFORCING ELEVATION VIEW



SECTION A-A



SECTION B-B
(OTHER BARS SAME AS SECTION A-A)

BRIDGE "A" ABUTMENT 1 QUANTITIES

ITEM	UNIT	TOTAL
CLSM BACKFILL	C.Y.	10.0
CLASS A CONCRETE	C.Y.	56.3
EPOXY COATED REINFORCING STEEL	LB.	6,894.0
PILES, FURNISHED (HP10X42)	L.F.	435.0
PILES, DRIVEN (HP10X42)	L.F.	435.0
WATER REPELLENT (VISUALLY INSPECTED)	S.Y.	68.5

BRIDGE "A" ABUTMENT 1 BAR LIST

MARK	SIZE	FORM	NUMBER	LENGTH	LENGTH VARIATION
EPOXY COATED					
BH1	#8	STR.	12	51'-9"	
BH2	#4	STR.	4	51'-9"	
BH3	#4	STR.	12	51'-9"	
BH4	#6	STR.	68	6'-9"	
BH5	#4	BNT.	27	7'-11"	
S1	#5	BNT.	35	13'-1"	
S2	#5	BNT.	70	12'-1"	
BV1	#4	BNT.	35	7'-10" AVG	7'-4" TO 8'-4"
BV2	#5	STR.	35	6'-10" AVG	6'-4" TO 7'-4"
P1	#4	BNT.	30	7'-11" AVG	5'-10" TO 10'-0"
P2	#4	BNT.	30	8'-8" AVG	6'-7" TO 10'-9"
PH	#4	BNT.	6	13'-11"	

TULSA COUNTY OKLAHOMA DEPARTMENT OF TRANSPORTATION

US-64 OVER 97TH W. AVE.

DESIGN	MW	11/16
DRAWN	SDK	11/16
CHECKED	HRA	11/16
APPROVED		
WALTER P MOORE		

DETAILS OF BRIDGE "A" ABUTMENTS (ABUT. NO. 1)

STATE JOB NO. 28884(04) SHEET NO. 38

V:\MPS\2012\2000-07 0000 EC-1414 US-64 Over 97th W. AVE 3/16/12 10:00:00 AM 13 2017 8:16am wpmoore